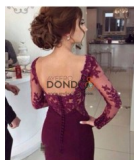
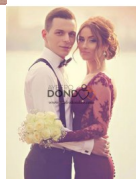
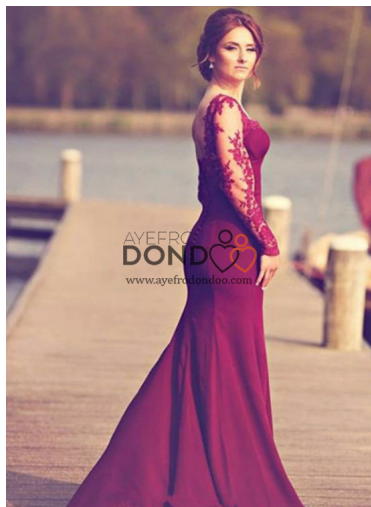


AYF00411



Vestido De Festa 2016 Burgundy Lace Mermaid Evening Dresses Sweetheart Sheer Long Sleeves Court Train Prom Gown Engagement Dress

PAYMENT TERMS This engagement gown is custom-made to your measurements. To pay for the gown, you need to make 50% deposit (half of the total), and then when the gown is ready, you pay the remaining 50%. If your engagement is a few months away, you can take advantage of our **OPTIONAL 6 months finance at 0% interest rate**. No matter how long it is to your engagement, talk to us to arrange a **PAYMENT PLAN** for you. **6 MONTHS OPTIONAL FINANCE AVAILABLE ON THIS GOWN** Spread the cost of your purchase. You pay half - we lend you half! See more below. Colour: Pink | Red | Blue | Green | Black | Champagne | White | Ivory | Orange | Yellow | Beige | Brown | Gold | Grey | Khaki | Silver | Red | Purple | More Colours US Size: 2 | 4 | 6 | 8 | 10 | 12 | 14 | 14W | 16 | 16W | 18 | 18W | 20 | 20W | More Sizes

Rating: Not Rated Yet

Price

Sales price ?1,500.00

Discount ?-191.00

Tax amount

[Ask a question about this product](#)

Description

Vestido De Festa 2016 Burgundy Lace Mermaid Evening Dresses Sweetheart Sheer Long Sleeves Court Train Prom Gown Engagement Dress

FINANCE BREAKDOWN EXAMPLE

Assuming the total cost of your purchase is ₵1500, you only have to pay the first half (₵750) as deposit. Depending on your financial circumstances, we will lend you the remaining half (₵750) which should be paid in full before we release your item. The item will get to us within four weeks. We will keep your item until the balance is paid off in full before you collect your item. See breakdown below.

Purchase Price	₵1500
Deposit to Pay	₵750 (Non-Refundable)
Amount of Credit	₵750
Monthly Payments	₵125
Amount of Interest	₵0
Number of Monthly Payments	6
Total Amount Payable	₵1500
Rate of Interest (Fixed for 6 months)	0% (Fixed)
APR Representative	0%

- Finance available to Ghanaian residents over 18, subject to terms & conditions.
- We fully subsidise the cost of finance and regret that we cannot offer finance in conjunction with a discount promo code.
- Ayefro Dondoo acts as a credit intermediary and offer credit products provided exclusively by ourselves.
- The maximum term to repay the balance of your gown is 6 months. You can choose to pay in full earlier than the 6 months to collect your gown, or you can wait till the 6 month period. The choice is YOURS!
- The gown will be delivered to you after full payment is received.
- The DEPOSIT is NON-REFUNDABLE

- Occasion:Prom
- Item Type:Prom Dresses
- Waistline:Empire
- Decoration:Appliques
- is_customized:Yes
- Sleeve Style:Regular
- Fabric Type:Chiffon
- Material:Polyester
- Train:Sweep Train
- Dresses Length:Floor-Length
- Silhouette:Trumpet / Mermaid
- Neckline:Sweetheart
- Built-in Bra:Yes
- Actual Images:No
- Sleeve Length(cm):Full

Reviews

There are yet no reviews for this product.