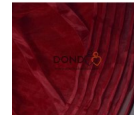
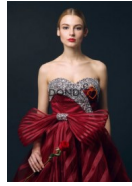


AYF00368





Vintage Noble Design Strapless Beading Floor-length Wedding Dresses **PAYMENT TERMS** This gown is custom-made to your measurements. To pay for the gown, you need to make 50% deposit (half of the total), and then when the gown is ready, you pay the remaining 50%. If your wedding is a few months away, you can take advantage of our OPTIONAL 6 months finance at 0% interest rate. No matter how long it is to your wedding, talk to us to arrange a PAYMENT PLAN for you. **6 MONTHS OPTIONAL FINANCE AVAILABLE ON THIS GOWN** Spread the cost of your purchase. You pay half - we lend you half! See more below.

Rating: Not Rated Yet

Price

Sales price ?4,680.00

Discount ?-520.00

Tax amount

[Ask a question about this product](#)

Description

Vintage Noble Design Strapless Beading Floor-length Wedding Dresses

FINANCE BREAKDOWN EXAMPLE

Assuming the total cost of your purchase is ?1500, you only have to pay the first half (?750) as deposit. Depending on your financial circumstances, we will lend you the remaining half (?750) which should be paid in full before we release your item. The item will get to us within four weeks. We will keep your item until the balance is paid off in full before you collect your item. See breakdown below.

Purchase Price	?1500
Deposit to Pay	?750 (Non-Refundable)
Amount of Credit	?750
Monthly Payments	?125
Amount of Interest	?0
Number of Monthly Payments	6
Total Amount Payable	?1500

Rate of Interest (Fixed for 6 months) 0% (Fixed)
APR Representative 0%

- a. Finance available to Ghanaian residents over 18, subject to terms & conditions.
- b. We fully subsidise the cost of finance and regret that we cannot offer finance in conjunction with a discount promo code.
- c. Ayefro Dondoo acts as a credit intermediary and offer credit products provided exclusively by ourselves.
- d. The maximum term to repay the balance of your gown is 6 months. You can choose to pay in full earlier than the 6 months to collect your gown, or you can wait till the 6 month period. The choice is YOURS!
- e. The gown will be delivered to you after full payment is received.
- f. The DEPOSIT is NON-REFUNDABLE

Color

Wine Red

Size

US2, US4, US6, US8, US10

Material

Polyester/Terylene

Length

Floor Length

Closure Type

Pullover

Wash&Care

Dryclean

Pattern Type

Patchwork

Style

Vintage

Sleeve Length

Sleeveless

Stretchability

Non-Stretchable

Gender

Women

Accessories:No

Overview:

(1)Polyester +Organza

(2)Sleeveless

(3)Bow

(4)Ball Gown

(5)Beading

(6)Mid Waist

(7)Church,Hall

(8)Floor-length

Fit&Sizing:

Non-Stretchable

Detail In Tile Measurement:

Size(Bust Waist Hip cm)	Hollow To Floor
-----------------------------	--------------------

US 2 80 61.5 87	155
-----------------	-----

#

US 4 83 64.5 90	155
-----------------	-----

#

US 6 86 67.5 93	155
-----------------	-----

#

US 8 89 70.5 96	155
-----------------	-----

#

US 1 92 73.5 99	155
-----------------	-----

0#

Warm Tips:

1.Please Check The Above Detailed Measurement To Choose The Correct Size,

And Allow 3-4 Cm (1.18"-1.57") Differences Due To Manual Measurement.

2.A little color shading may be caused by the light difference and photograph skill.Thanks.

Reviews

There are yet no reviews for this product.